

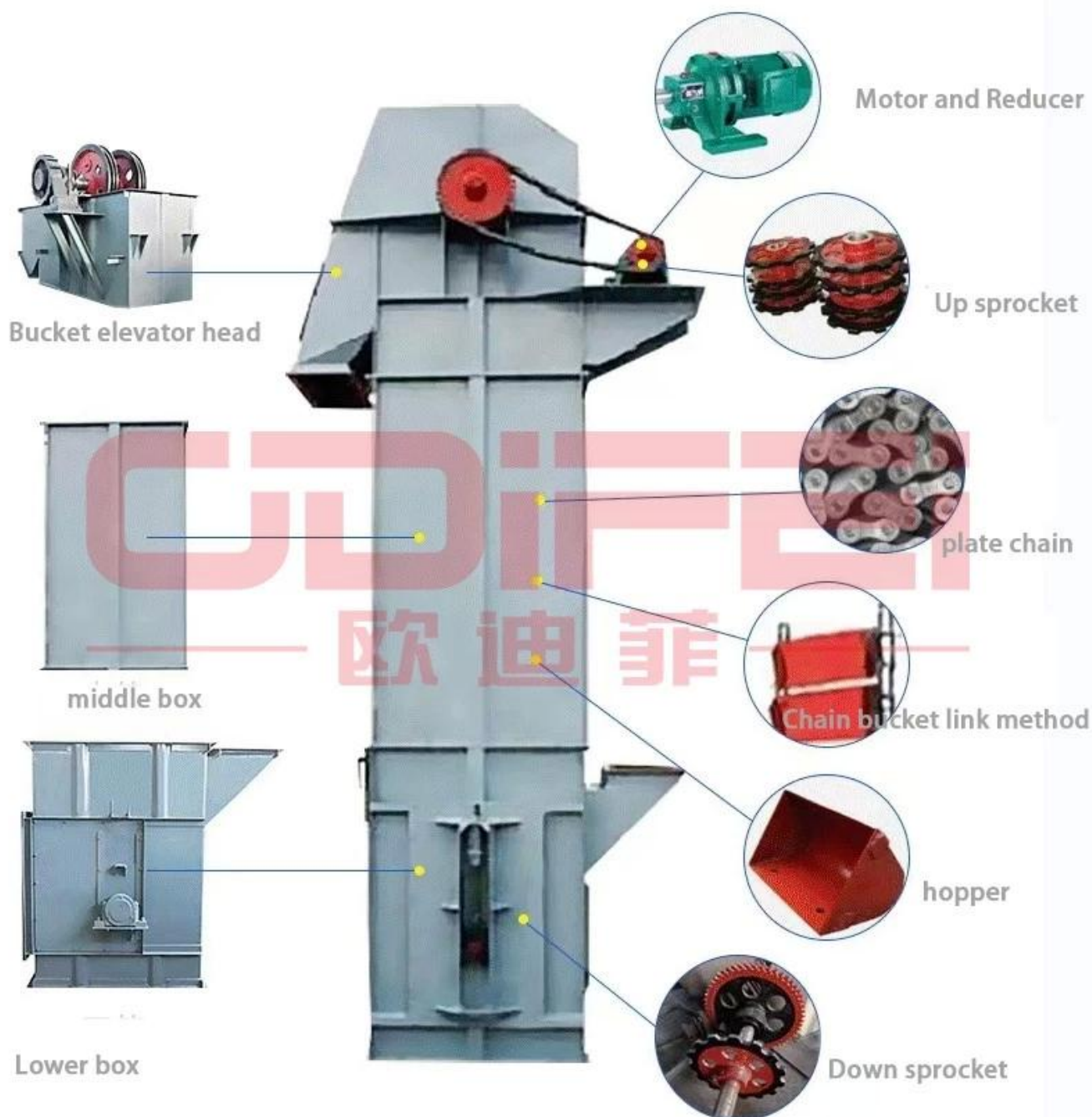
TD/TH/NE Vertical Chain Belt Bucket Elevator for Cement

Introduction of the bucket elevator

TD/TH/NE Vertical Chain Belt Bucket Elevator is a heavy-duty machine. Bucket elevators are Very stable running, Small footprint, High conveying capacity, Many different line versions available, and Multiple drop-off points are possible. Bucket conveyor elevators convey products like resistant materials, chemical granules, sand, pellets, powders, and many other industrial applications for free-flowing, dry material.



Structural features



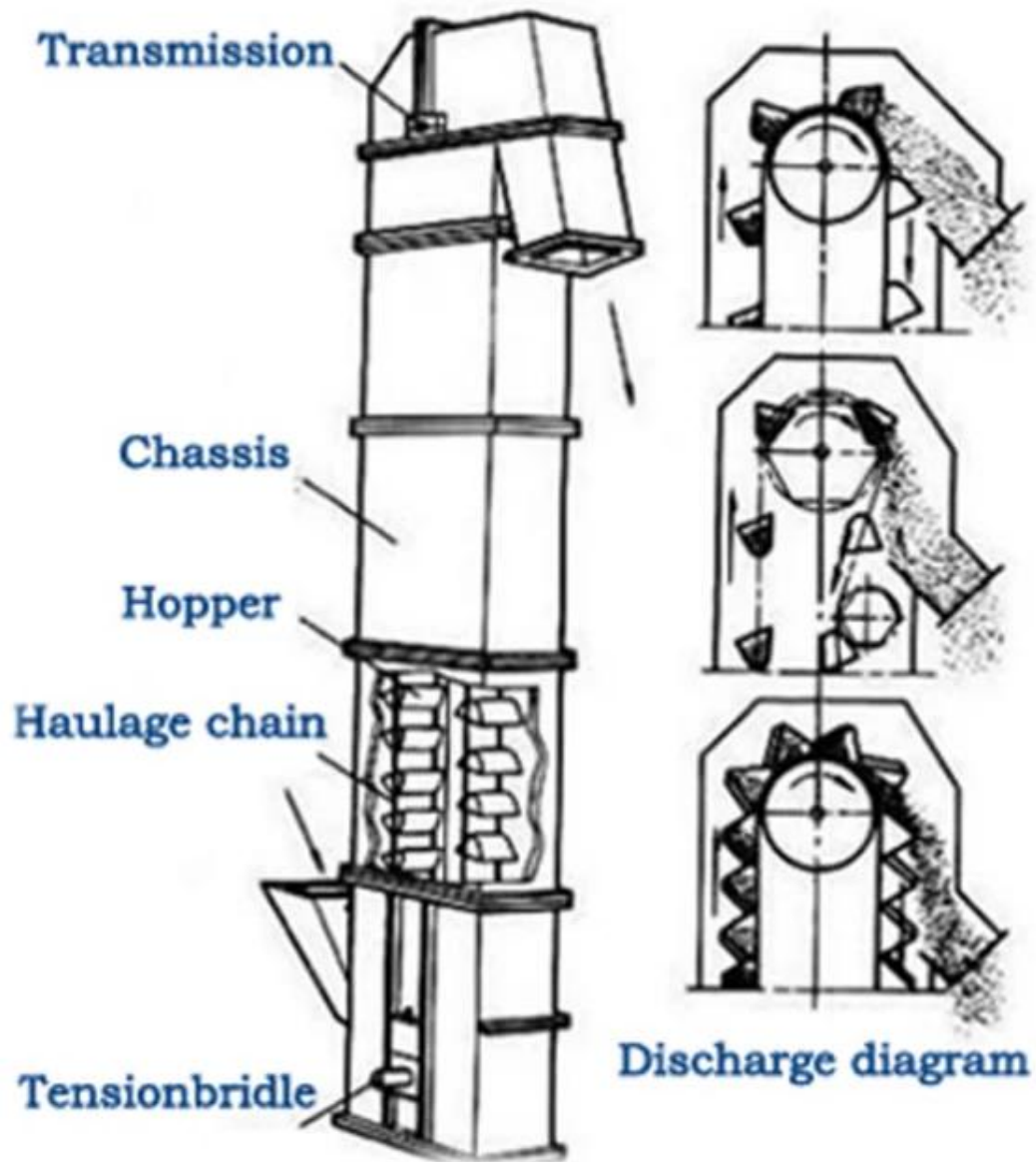
Technical Parameters

model	TD160				TD250				TD315				TD400			
Hopper form	Q	H	Zd	Sd	Q	H	Zd	Sd	Q	H	Zd	Sd	Q	H	Zd	Sd
delivery volume (m3/h)	5.4	9.6	9.6	16	12	22	23	35	17	30	25	40	24	46	41	66
Bucket width(mm)	160				250				315				400			
Bucket capacity(L)	0.5	0.9	1.2	1.9	1.3	2.2	3.0	4.6	2	3.6	3.8	5.8	3.1	5.6	5.9	9.4
Bucket distance(mm)	280		350		360		450		400		500		480		560	
bandwidth(mm)	200				300				400				500			
bucket speed(m/s)	1.4				1.6				1.6				1.8			

Largest piece of material(mm)	25				35			45				55			
model	TD500				TD630			D160		D250		D350		D450	
Hopper form	Q	H	Zd	Sd	H	Zd	Sd	Q	S	Q	S	Q	S	Q	S
delivery volume (m3□h)	38	70	58	92	85	89	142	4.7	8	18	22	25	42	50	72
Bucket width(mm)	500				630			160		250		350		450	
Bucket capacity(L)	4.8	9	9.3	15	14	14.6	23.5	0.65	1.1	2.6	3.2	7	9.8	14.5	18
Bucket distance(mm)	500		630		710			300		400		500		640	
bandwidth(mm)	600				700			200		300		400		500	
bucket speed(m□s)	1.8				2			1		1.25		1.25		1.25	
Largest piece of material(mm)	60				70			25		35		45		55	

Working principle of the Bucket Elevator for Cement

The hopper scoops up the material from the storage below, lifts to the top with the conveyor belt or chain, bypasses the top wheel and turns down, and the bucket elevator dumps the material into the receiving trough. The transmission belt of the bucket elevator with transmission is generally a rubber belt, which is installed on the lower or upper driving roller and the upper and lower redirecting roller.



Product Parts



Belt



hopper



wheel



Chain

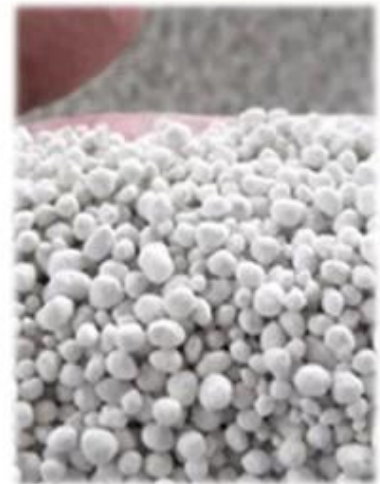
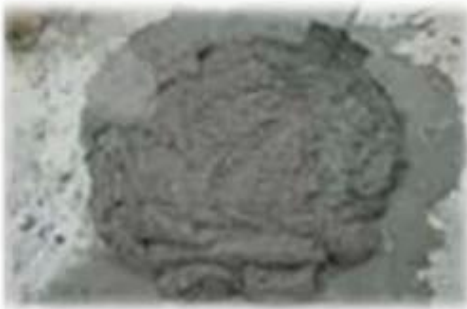


Observation port

Applicable raw materials

Belt Bucket Elevator is mainly used in grain processing production line (such as rice mill production line, millet production line, wheat flour production line, etc) for the vertical

continuous conveying of powdery materials or granular materials, such as grains (paddy rice, rice, wheat, corn, soybeans, sesame, sorghum, etc).



Product advantages of the bucket elevator:

1. Easy maintenance, long service life.
2. The chassis plate thickening, good rigidity.
3. The conveying material temperature up to 250 °C. Section
4. In the case with a single channel and dual channel two forms.
5. Hoisting height stable and reliable operation, low noise, easy maintenance.

6.Improve models improve throughput is 30% greater than normal models.

7. Hoist chain using low alloy steel forging, and after carburizing and quenching processes, and have high tensile strength and wear resistance.

